



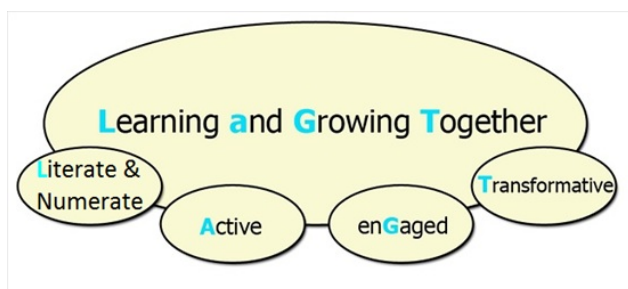
1 Shoalhaven Avenue
Pacific Pines QLD 4212
Subscribe: <https://parklakess.schoolzineplus.com/subscribe>

Email: office@parklakess.eq.edu.au
Phone: 07 5519 5200
Fax: 07 5519 5276



Thursday 18 February 2021

EXECUTIVE TEAM UPDATE



Dear Parent/Carer,

2021 School Priorities

School Priorities:

- Quality Teaching and Learning
- Collaborative Learning Culture
- Know Our Students

In 2021, our staff will continue their focus on the above school priorities. These key priorities have seen a consistent focused approach over the past year, and resulted in school growth. Moving forward we will continue our efforts in these areas, building upon the work that has already been achieved. The hard work of our teaching staff, students and wider community can be directly attributed to this growth – with significant increases in the A-E data for our school.

Staff have been working as Collaborative Learning Teams to ensure all students are flourishing both academically and with their social and emotional wellbeing. This has also included a strong focus on knowing all of our students and their needs, and using the data we gather through learning experiences to respond effectively with quality teaching approaches. Our school motto and vision focuses on learning and growing together and these school priorities will continue to assist us with achieving this.

Thank you to all parents who made the effort to pop in and meet the teacher on the pupil free days, or those who've contacted teachers since this time to connect. By the end of this week all classes will have sent additional information to parents to assist in understanding the organisational details for their class, as well as

some introductions. Some will have already arrived in your inboxes by now. This information, as well as meeting your child's teacher on the pupil free days helps to support your child in their learning journey and learn about what is occurring in the classroom. We encourage parents to take every opportunity to work in partnership with the school to support student learning and wellbeing.

We intend on providing a number of parent workshops over the year, and we encourage you all to take an active approach to your child's learning and engage in as many of these opportunities as you can. We will try to offer some Facebook live opportunities and/or videoed sessions, to enable parents to engage from offsite.

P&C Meetings are also a great opportunity for parents to connect and learn about what is happening in the school, and also to share initiatives or ideas they have that may support student learning. Our first P&C meeting for the year was held this week, thank you to those that attended. It is not too late to become a part of the P&C with meetings held each month, look out for the next date claimer if you'd like to become involved.

Investing for Success Funding

Park Lake State School has been granted (under the Investing in School's funding) an anticipated allocation of \$304,000 to enhance our students' literacy and numeracy performance. A considerable amount of work has been undertaken to ensure this funding addresses the needs of our targeted students. During 2021 our school will direct this funding towards improving student achievement in English and Mathematics.

This funding will also be directed towards targeted support across our Early Years as they transition to formal schooling. Areas of difficulty in language and speech domains have been identified through AEDC data across the past few years, so additional funding has been allocated to provide additional support in this area, beyond that which we receive under our assigned allocation.

More information regarding our Investing for Success initiative and our intended strategies will be uploaded to the school's website once the agreement has been endorsed by the Director-General of the Department of Education. Parents wishing to obtain more information about this initiative are encouraged to contact our office.

School Attendance

Our first week of schooling started in a fantastic way with close to 100% attendance each day. Those few absences recorded were due to genuine illness. Research shows that regular attendance is key to student learning.

A reminder to all families that learning commences at 8:45am and students need to be in classrooms seated by this time. Our 8:20am

move from covered areas to classes allows students to organise their belongings for the day, and to be ready and in classrooms prior to 8:45, when learning commences. That organisational time is vital for a positive start to the day. Once all parents and the bulk of students have moved at 8:30, we have time to provide supportive transitions for some of our students with additional needs. Clear pathways and quieter surrounds ensures they also get that much needed organisational time for a smooth start to the day. We have noticed that our classrooms have been very settled at the start of each day as a result of our processes around this.

Late arrivals and early departures have an impact on the learning of all children with disruptions to teaching and focus for all students, as well as those particular children not in attendance missing out on key content. This is an area of focus for improvement.

Our school encourages all parents and members of our community to support the State Government initiative to improve student attendance. The program – Every Day Counts – has four key messages:

- all children should be enrolled and attend school on every school day
- schools should monitor and create ways to improve attendance in schools
- attendance is the responsibility of everyone in the community
- children may find themselves in unsafe situations if they choose not to attend or skip school.

While most students attend school consistently, there is a small number of students who are absent from school without an acceptable reason and this may harm their education.

We will be closely monitoring student attendance during the term and contacting families with significant absences, or disruptions through late arrivals and early departures to discuss how we can support improvement in your child’s school attendance.

Every Day Counts’

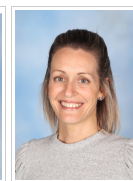
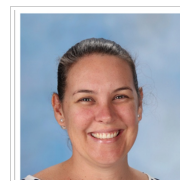
1 or 2 days a week doesn’t seem that much but If your child misses	That equals	Which is	And over 13 years of school that’s
1 day a fortnight	20 days per year	4 weeks per year	Nearly 1.5 years
1 day a week	40 days per year	8 weeks per year	Over 2.5 years
2 days a week	80 days per year	16 weeks per year	Over 5 years
3 days a week	120 days per year	24 weeks per year	Nearly 8 years

Thank you to everyone in the community for their support with the start of the school year. We have very settled children, and great focus and engagement in learning. We look forward to seeing parent helpers starting to return to classrooms. Please note for those who like to plan ahead that we will be conducting parent teacher interviews on Tuesday 23 March. These are run across one afternoon/evening, so please book this into your diary now, so you are available.

Have a great week.

The Executive Leadership Team

Ursula Carty, Principal; Sally Parahi, Deputy Principal (P-1); Barb Tong, Deputy Principal (2-3); Renee Austin, Deputy Principal (4-6); Martina Tramier, Head of Curriculum; Erin Mitchell, Head of Special Education Services.



Parent Article

Building Healthy Relationships With Teachers – Michael Grose

As a former primary school teacher with 15 years experience and a parenting educator with 30 years experience, I’ve learned a great deal about the importance of healthy relationships between a child’s parent/s and their teacher. I hold a Master of Educational Studies from Monash University specialising in parenting education, a Bachelor of Education and a Diploma of Primary Teaching from SCV Toorak University (now Deakin University). I’ve done the theory and I’ve also put my boots on the ground. Uniquely, this has allowed me to appreciate perspectives from either side of the school gate.

Studies show that healthy parent–teacher relationships are a more significant factor in student success than parent income levels or social status. Parent–teacher relationships require effort and energy from both parties if they are going to really benefit children and young people. Here are some strategies to help you build a healthy working relationship with teachers in the year ahead.

Get to know them

For your partnership to be meaningful and successful, you need to connect with your children’s teacher(s) with the goal of forming a respectful professional relationship. Be willing to share your aspirations for your child and be willing to build the teacher’s knowledge about your family. For balanced perspective, also gain an understanding of the teacher’s approach and what focus areas they have for their particular year group. This can be done formally by attending start of the year meet the teacher sessions, parent teacher interviews and informally through phone conversations, reading newsletters and staying in touch digitally.

Trust their professionalism

Children need to know that their parents are fully behind what their teachers are trying to achieve if they are going to commit fully to learning. The best way to support your child’s teacher is to trust their knowledge, professionalism and experience. Avoid the temptation to question the expertise of teachers in front of students, particularly when the teachers use methods that you are unfamiliar with. Initiate conversations with teachers around methodology to give them the chance to explain the approach they are taking.

Go through the right channels

Despite the best teaching practices things do go wrong at school. Kids experience learning difficulties. Conflict and peer rejection happen. Kids will often come home from school with grievances, and call on you for assistance. Resist the urge to react emotionally. If you need to contact teachers do so respectfully, calmly and through the correct channels. A measured response will generally achieve the best result for your child.

Utilise their resources

Teachers and schools often put a lot of work into sourcing and sharing credible resources that they think will help parents. Take the time to read, utilise and enjoy the information provided to you. It’s intended to make your parenting journey easier, which will also benefit your child not just at school but at home. If your school

benefit your child not just at school, but at home. If your school doesn't yet have a clearly defined source in place, consider suggesting one to the teacher, such as the Parenting Ideas memberships for schools.

Build links to student learning

There's a huge body of research that points to the correlation between parent engagement in student learning and their educational success. If you want your child to improve their learning, take an interest in what they are doing. Follow school and teacher guidelines about helping at home and attend as many conferences, meetings and events involving your child as possible. This strategy has a significant, long-term impact on your child's attitude to learning.

Stay in touch

Life's not always smooth sailing for kids of any age. Family circumstances change. Friends move away. Illness happens. Mental health challenges can hit anyone at any time. These changes affect learning. Make sure that you keep teachers up to date with significant changes or difficulties that your child or young person experiences so they can accommodate your child's emotional and learning needs at school.

Be loyal

Show your loyalty to your child's teachers by being an advocate. Talk positively about your child's teacher and school, rather than being negative about them when speaking in the wider community. Teachers hold very public positions and generally work hard to build good reputations both within their school and their wider education community. Consider a teacher's reputation among the community and also with children when you discuss educational matters with others.

Building healthy parent-teacher relationships doesn't just happen

It takes goodwill from both sides, a commitment to setting aside the time necessary to support the home-based learning tasks that are expected, and a willingness to communicate both concerns and commendations through the correct channels.

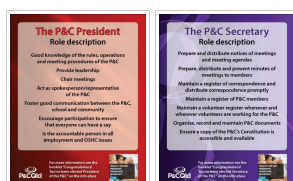
P&C CORNER

We received a great response to our call out for active volunteers, Thank you.

There are still some of our regular fundraisers that do not have anyone to run them so if you are interested in keeping these fun events for our kiddies then please don't hesitate to ask for more information.

Our P&C meeting on Tuesday was a great first meeting to start the year. Thank you to all that came, it was a great turn out with many new faces. There are only 8 meetings a year and they typically go between 60-90minutes and ALL ARE WELCOME.

All P&C Executive positions become vacant at the AGM on March 16th. This happens every year but this year is the first one in many years that our current President, Treasurer and Secretary positions will not be reinstated. (Gulp!) Yes our current executive members will step back into supporting rolls on the P&C leaving way for fresh/new executives to step forward into these rewarding roles. If you are interested in any of these executive rolls please email me and I will give you more information.



BOOK CLUB LAST ORDERS NEED TO BE MADE BY TOMORROW FRIDAY 19TH FEBRUARY!

Orders are all online so if you didn't receive a booklet or need any guidance please don't hesitate to email Juliette on bookclub@parklakess.eq.edu.au

Banking is on Mondays

Our banking has started back! Bring your savings and bank book into the uniform shop between 8-9am each Monday. New to banking? Information will be emailed out very soon.

Have a great fortnight!

Please feel welcome to email me anytime with questions or queries. The P&C is your parent support throughout the school.

**Keep Smiling,
Lee-Anne Millard**

pandcpresident@parklakess.eq.edu.au

UP-COMING MEETINGS

Tuesday 16th March, 2021- 6pm AGM

Tuesday 11th May, 2021- 6pm

Meetings are held in the staff room – next to the library. All are welcome

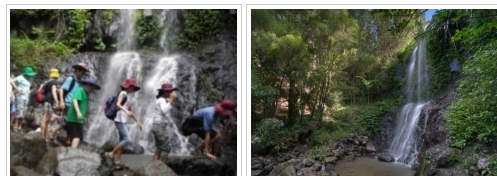
https://parklakess.schoolzineplus.com/_file/media/801/lunch_box_id_eas.pdf

SPOTLIGHT ON LEARNING - YEAR 5

This term Year 5 are focussing on building the keys to success (Getting Along, Resilience, Persistence, Confidence and Organisation) in the lead up to their 2 night camp in week 7.

For this particular cohort, camp is a first and we are extremely excited to be attending a brand new venue with high quality activities and facilities (including HOT water!).

Activities may include: Rock-hopping; A waterfall walk; Camping Skills; Archery or biking; Canoeing; High Ropes or flying fox.



Teachers and students alike cannot wait to enjoy this experience together!

The Year 5 Team

IMPORTANT DATES

DATE	ACTIVITY
FEBRUARY	
Wed 24	Halogen Student Leaders Day
Fri 26	Student Council Awareness Day
MARCH	
Mon 1	Regional Swimming
Tues 2	Student Leader Induction
Fri 5	Year 2 Water Incursion
Mon 8 - Wed 10	Year 5 Camp Tyalgum Ridge Retreat
Wed 10	Year 4 St Helena Island Excursion
Thurs 11	Year 4 St Helena Island Excursion
Tues 16	Interschool Sport Yr 4 - 6

Tues 16	P&C Meeting 6:00pm
Fri 19	National Day of Action Against Bullying
Tues 23	Parent Teacher Evening
Mon 29	Strings Workshop (Year 4 strings students) Oxenford SS
Tues 30	Year 6 Surf Safety
APRIL	
Thurs 1	Cross Country Yrs 4 - 6
Thurs 1	Last Day Term 1
Fri 2	Good Friday Public Holiday
Mon 19	Term 2 Commences
Tues 20 - Wed 21	Year 1 Science Incursion
Mon 19 - Wed 5 May	Year 5-6 Puberty & Relationships Education
Wed 21 - Fri 23	Student Council ANZAC Stall
Fri 23	ANZAC Day Service 9:00am (Students Only)
Sun 25	ANZAC DAY
Mon 26	ANZAC Day Public Holiday
Thurs 29	Year 4 Street Science Incursion
Fri 30	Year 5 Eureka Excursion
MAY	
Mon 3	Labour Day Public Holiday
Wed 5	P&C Mother's Day Stall
Thurs 6	School Photos
Thurs 6	District Cross Country
Fri 7	School Photos
Tues 11 - Thurs 13	NAPLAN
Tues 11	Year 2 Street Science Incursion
Fri 14	Cross Country Yrs 2 - 3
Mon 17	Yr 2 Start Smart Workshop
Wed 19	National Simultaneous Storytime
Wed 19	Cross Country Prep - 1
Fri 21	Student Council Awareness Day
Wed 26 - Fri 28	Year 6 Camp Lake Ainsworth
JUNE	
Wed 9	Year 4 Camp Currumbin Valley Camp 1
Mon 14	Year 4 Camp Currumbin Valley Camp 2
Tues 15	Athletics Carnival Yr 5 - 6
Wed 16	Year 4 Camp Currumbin Valley Camp 3
Mon 21	Athletics Carnival Yr 3 - 4
Tues 22	Interschool Sport Yr 4 - 6
Fri 25	Last Day of Term 2
JULY	
Mon 12	Term 3 Commences

ASSEMBLY TIMETABLE TERM 1 2021

PLEASE NOTE

ASSEMBLY COMMENCES IN THE HALL AT 2:00PM

**PARENTS WILL BE ABLE TO ATTEND ASSEMBLIES FROM
MONDAY 22ND FEBRUARY**

TERM 1	EARLY/MIDDLE/SENIOR	ASSEMBLY HOSTS
Monday 22 February	Senior	6B and 6C
Monday 1 March	Middle	3A and 3B
Monday 8 March	Early	1A and 1B
Monday 15 March	Senior	5/6F and 5E
Monday 22 March	Middle	2A and 2B
Monday 29 March	Early	1C and 1D

PAYMENT DATES AND EXCURSIONS

EXCURSIONS/INCURSIONS DUE DATES 2021

ACTIVITY	YEAR LEVEL	COST	DUE DATE
Halogen Leadership Day	Student Leaders	\$30.00	9:30am Friday 19th Feb, 2021
St Helena Island	Year 4	\$40.00	9:30am Monday 1st March, 2021
Yr 5 Camp Tyalgum Ridge Retreat	Year 5	\$290.00	9:30am Wednesday 3rd March, 2021
Interschool Sport	Years 4 - 6	\$50.00	9:30am Friday 5th March, 2021
Religious Instruction Activity Book	Year 1 RI Students Only	\$6.00	Prior to commencement of lessons week 4
Religious Instruction Activity Book	Year 2 - 5 RI Students Only	\$8.00	Prior to commencement of lessons week 4

Our preferred method of payment is via BPoint, the new Qkr App, QParent Portal or internet banking.

Please note that cash and or card payments are no longer permitted to be made at the school office.

Our bank details for internet banking are as follows and payment needs to be made 2 days prior to the due date to ensure it makes our bank account on time.

LATE PAYMENTS WILL NOT BE ACCEPTED.

BSB: 064-474

Bank Account Number: 10252850

Reference: Please use your child's name.

Please return the completed Permission/Medical forms to your child's teacher via email.

Paper copies can no longer be accepted due to Covid-19 restrictions.

https://parklakess.schoolzineplus.com/_file/media/582/qkr_marketin_g_howto_school.pdf

https://parklakess.schoolzineplus.com/_file/media/583/qkr_marketin_g_howto_pandc.pdf

RELIGIOUS INSTRUCTION

https://parklakess.schoolzineplus.com/_file/media/802/ri.pdf

CAMP AUSTRALIA

COMMUNITY NEWS

DIVING QUEENSLAND

We are running a **FREE 'Come and Try'** day at the Gold Coast Aquatic Centre, Southport on Saturday & Sunday 13 & 14 March. The "Come and Try" day is open to all kids, Boys & Girls aged from 8+ yrs.

Two of Diving Queensland's Coaches, Joey Zuber, head coach for Paradise Diving Club & Cliff Diving Expert and Matt Barnard AIS Athlete and Commonwealth Games Diver 2018 will be taking the lead and working in conjunction with Diving Queensland Coaches to find

our "Next Generation of Divers".

We are looking for Australia's and QLD's next set of World Class Divers as we set our sights on a potential home Olympic Games in 2032!!!

QUEENSLAND

IS LOOKING FOR THE NEXT GENERATION OF DIVERS!



DIVING QUEENSLAND

0437 432 435
admin@divingqld.org.au
Gold Coast Aquatic Centre
March 13/14, 2021

Book in for your FREE testing day to be part of a brand new talent pathway program on the Gold Coast

WE WANT YOU TO COME PLAY RUGBY UNION



WE ARE A FUN, FAMILY, COMMUNITY BASED JUNIOR CLUB.



YATALA RAMS JRUC

Check out our Facebook page for

  www.yatalarugbyunion.com.au
yatalarugby@gmail.com
0456 847 468

facebook page for Open Day details
Like us on Facebook

GOLD COAST DISTRICT RUGBY UNION COMPETITION

RUGBY UNION SIGN ON

Touch, Tackle, Rugby 7s



HOME GROUNDS TRAINING

WINDAROO VALLEY STATE HIGH SCHOOL OVAL
240 BEENLEIGH-BEAUDESERT RD, BAHR'S SCRUB
Entry to fields via Bahrs Scrub Road

Tuesday 5:30 - 6:30pm
Thursday 5:30 - 6:30pm

AGES

6-18 Years Old
Girls & Boys

GAMES

Saturday Mornings
Pre-season Games commencing late March



Check out our Facebook page for Open Day details
Like us on Facebook

www.yatalarugbyunion.com.au
yatalarugby@gmail.com
0456 847 468